

MONTHLY MEMBERSHIP PROGRESS REPORT

LOCATION ALASKA

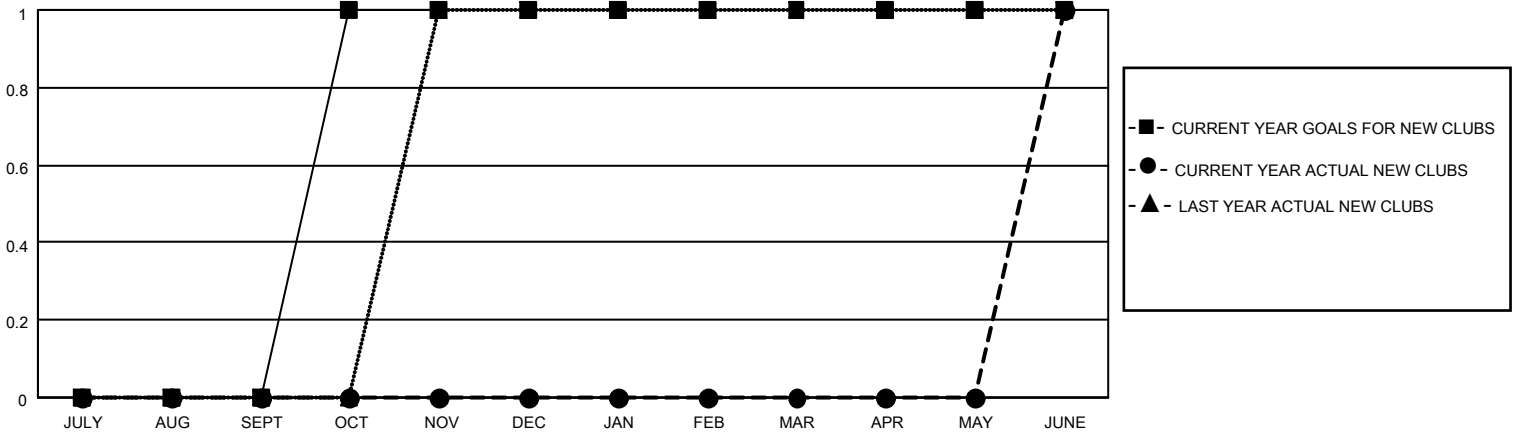
District 49 A

Results as of: 6/30/2023

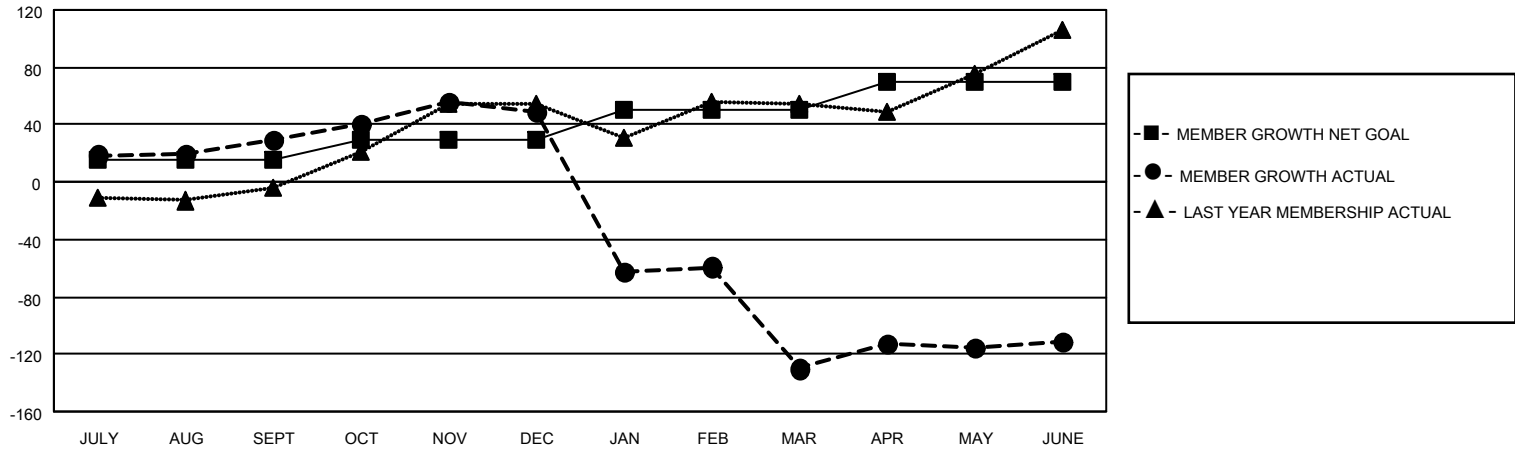
| Clubs | | | |
|-----------------------|---------------|-----------|---------------|
| RESULTS FOR 2022-2023 | | | |
| QUARTER | NEW CLUB GOAL | NEW CLUBS | DROPPED CLUBS |
| JULY/AUG/SEPT | 0 | 0 | 0 |
| OCT/NOV/DEC | 1 | 0 | 0 |
| JAN/FEB/MAR | 0 | 0 | 0 |
| APR/MAY/JUNE | 0 | 1 | 1 |

| Members | | | |
|-----------------------|------------------------|----------------------|-------------------------------------------------|
| RESULTS FOR 2022-2023 | | | |
| QUARTER | MEMBER GROWTH NET GOAL | MEMBER GROWTH ACTUAL | DROPPED MEMBERS ACTUAL (including transfers) |
| JULY/AUG/SEPT | 15 | 46 | 12 |
| OCT/NOV/DEC | 15 | 46 | 25 |
| JAN/FEB/MAR | 20 | 37 | 211 |
| APR/MAY/JUNE | 20 | 164 | 113 |

GOALS AND ACTUAL NEW CLUBS CUMULATIVE



GOALS AND ACTUAL MEMBERS CUMULATIVE



| | |
|------------------------|------------|
| DROPPED CLUBS: 1 | |
| DROPPED MEMBERS | |
| DECEASED | 18 |
| CLUB CANCELLED | 31 |
| OTHER | 313 |
| TOTAL | 362 |

24 CLUBS OF 34 ADDED 1 OR MORE NEW MEMBERS

[CLICK HERE FOR CUMULATIVE MEMBERSHIP DATA](#)

| <u>GENDER DISTRIBUTION</u> | |
|--------------------------------------------|--------------|
| MALE | 669 (57.03%) |
| FEMALE | 499 (42.54%) |
| NON BINARY | 0 (0.00%) |
| PREFER NOT TO ANSWER | 5 (0.43%) |
| TOTAL FAMILY UNIT MEMBERS 262 | |
| FAMILY MEMBERS PAYING HALF DUES 136 | |